

BRC LIVERPOOL: Microbial Diseases



House of Commons

Science and Technology
Committee

The Cooksey Review:

Best Research for Best Health

Cooksey Review

Key findings

UK: Strong basic research

Insufficient translation of basic into applied research

Insufficient applied research to meet health needs

Cooksey Review

Key findings

Insufficient coordination between organisations

Research culture in NHS: Mixed

Drug development too slow

Office for Strategic Coordination of Health Research (OSCHR)

Medical
Research
Council
(MRC)

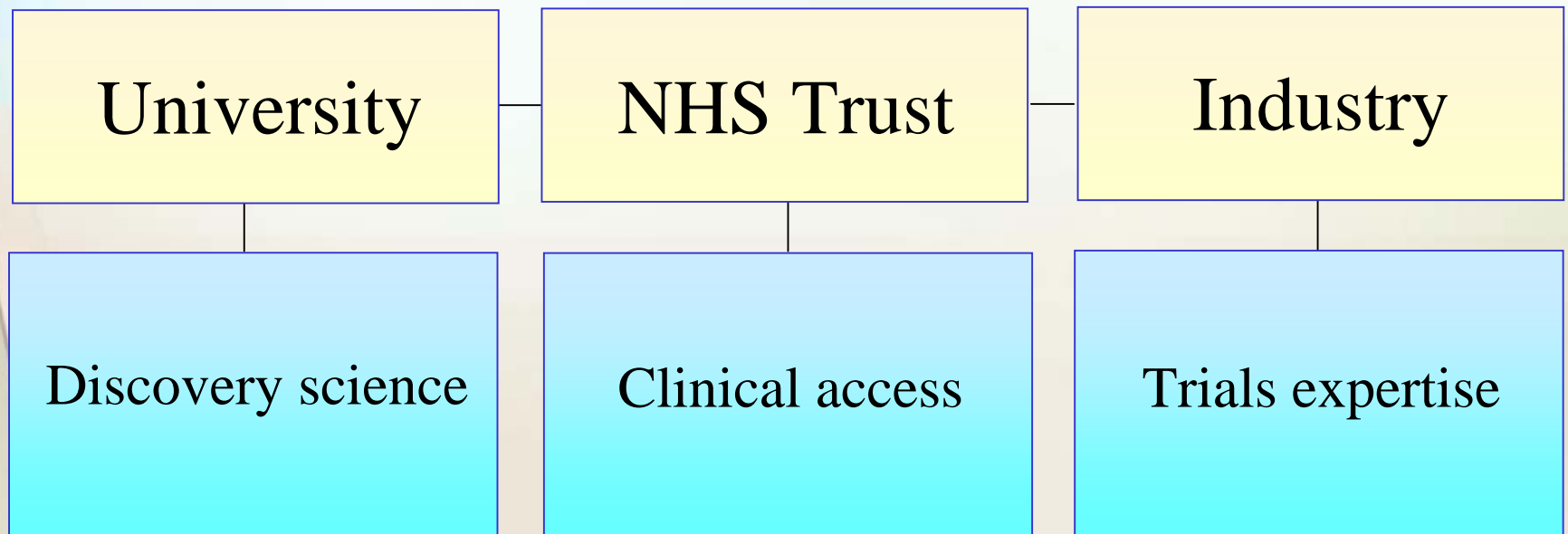
Translational
Medicine

National
Institute of
Health Research
(NIHR)

Discovery & Exploratory

Evaluation & Clin Trials

Translational Medicine



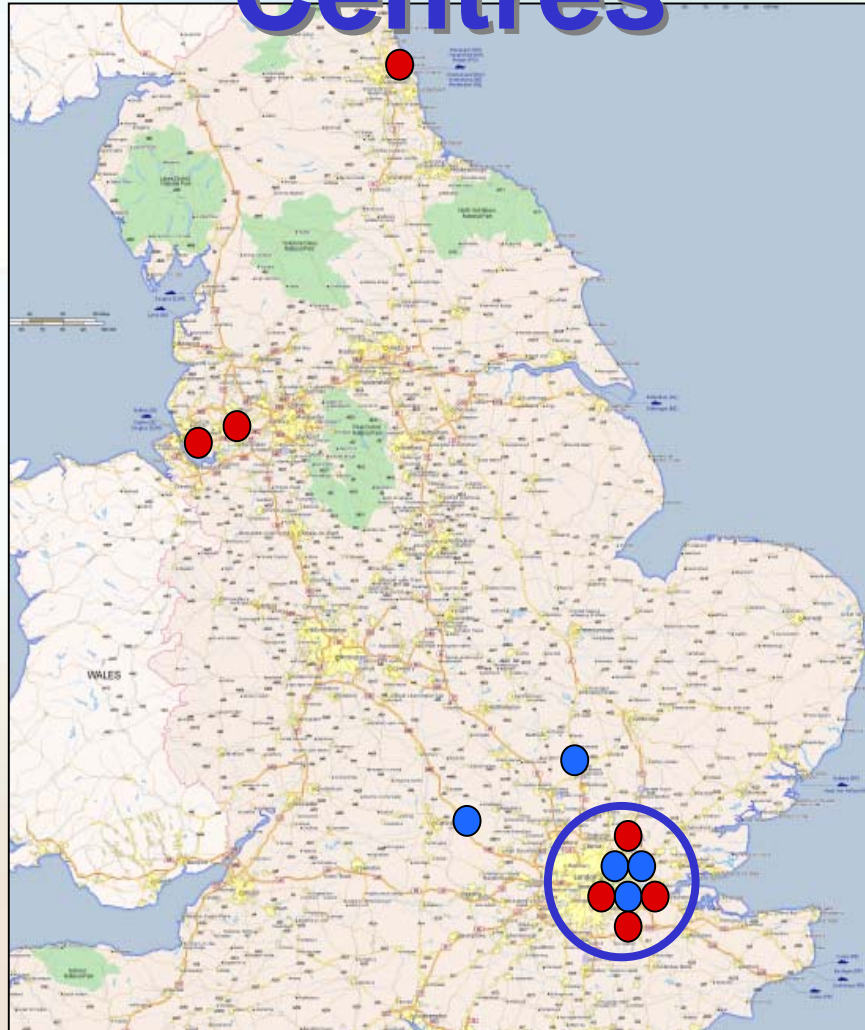
Biomedical Research Centre in Microbial Diseases

Royal Liverpool and Broadgreen University Hospitals Trust,

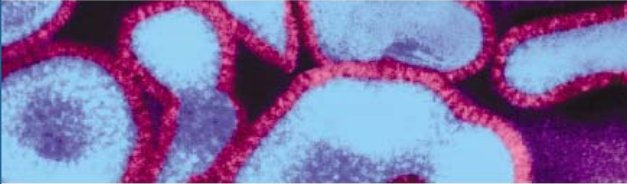
The University of Liverpool and the Liverpool School of Tropical Medicine



Biomedical Research Centres



The Liverpool bid

A microscopic image showing several cells with red, textured outer boundaries and blue, granular interiors, arranged in a somewhat circular pattern.

Getting Ahead of the Curve

A strategy for combating infectious diseases
(including other aspects of health protection)

A report by the Chief Medical Officer

- Strong research base
- Proven expertise in translation
- Strong partnerships – likelihood of commissions
- Clear vision
- Value for money

Product translation

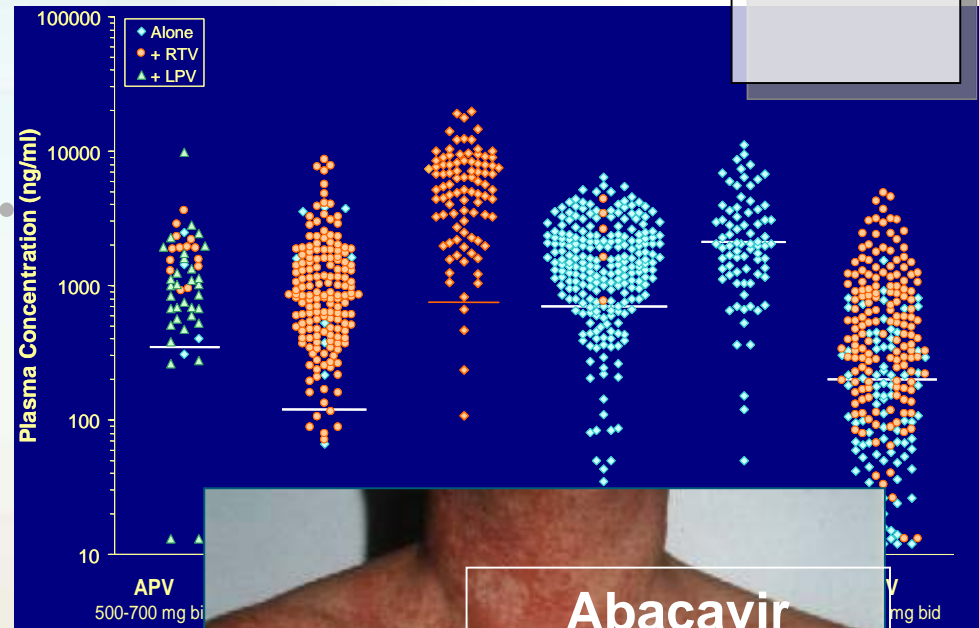
- **Lapdap™, CDA and GSK-369796.**
- TDM for anti-retrovirals
- Testing for drug risk



Product translation

Delphic

- Lapdap™, CDA and GSK-369796.
- TDM for anti-retrovirals
- Testing for drug risk



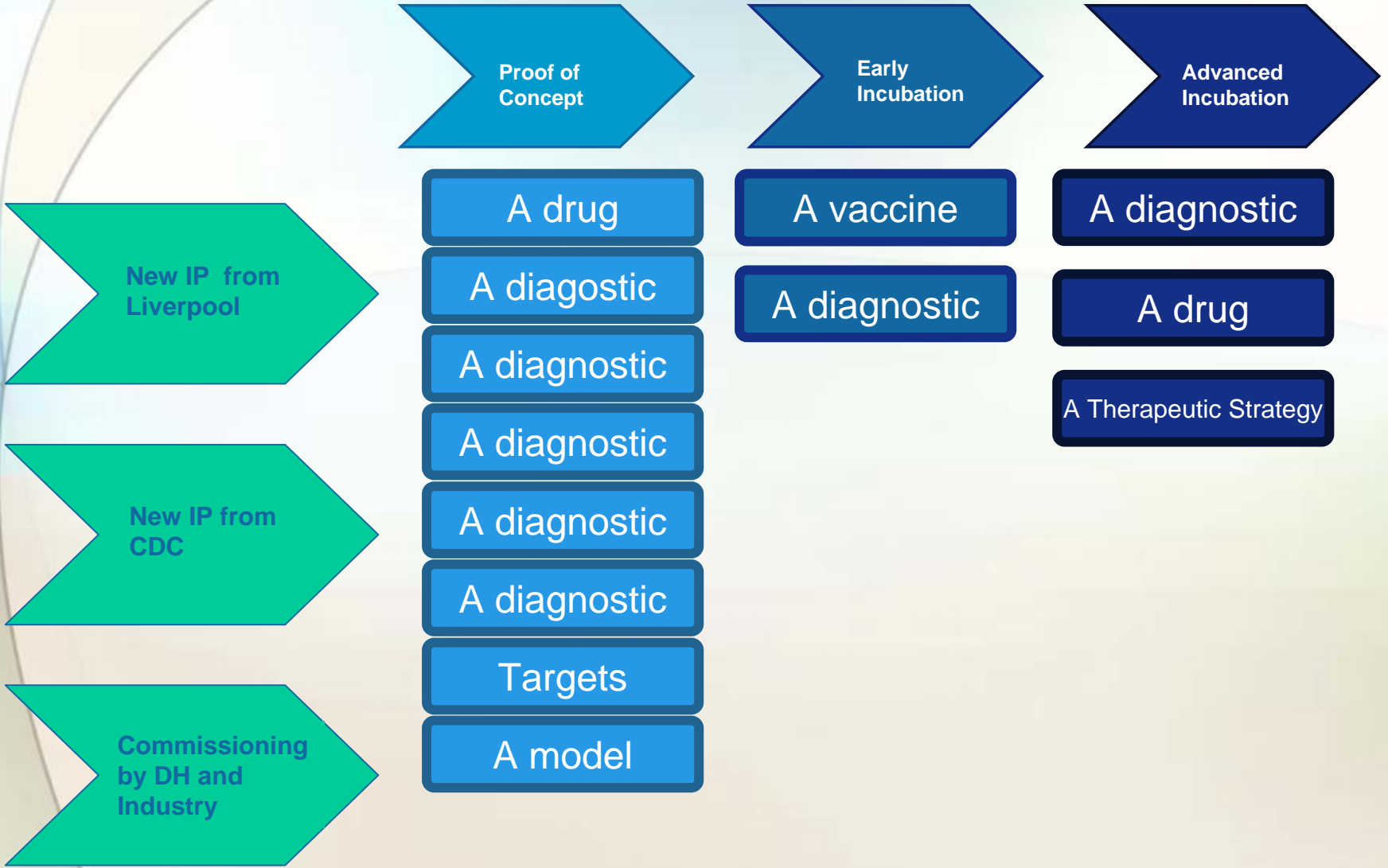
Themes

Sexual Health

Respiratory Infection

Safety of Antimicrobial Therapy

Hospital & Community Acquired Infections



Proof of Concept

Early Incubation

Advanced Incubation

New IP from Liverpool

New IP from CDC

Commissioning by DH and Industry

A drug

A diagnostic

A diagnostic

A diagnostic

A diagnostic

A diagnostic

Targets

A model

A vaccine

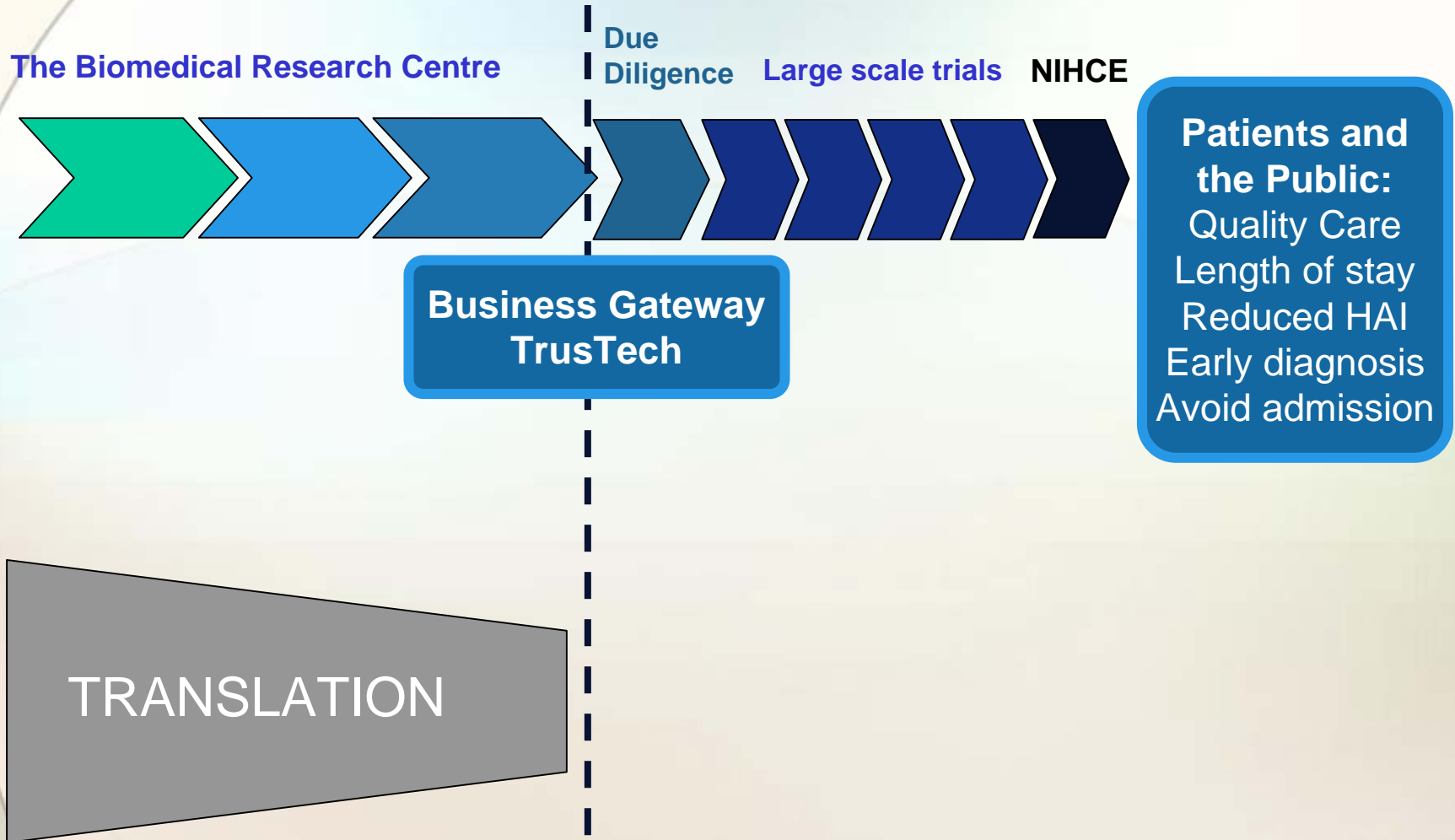
A diagnostic

A diagnostic

A drug

A Therapeutic Strategy

Health & Wealth



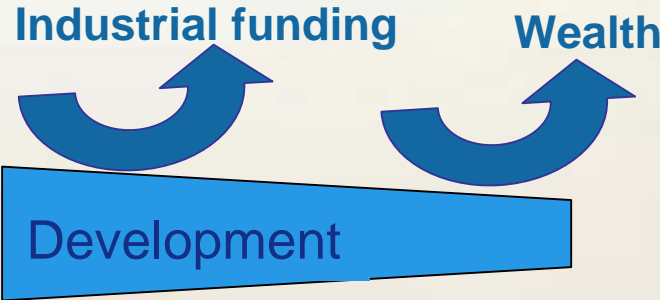
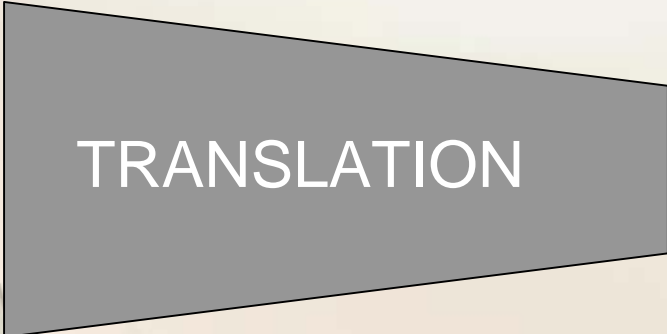
Health & Wealth

The Biomedical Research Centre

Due Diligence Large scale trials NIHCE



Patients and the Public:
Quality Care
Length of stay
Reduced HAI
Early diagnosis
Avoid admission



External Advisory Panel

Annual meeting

Chair: David Russell, Cornell

- Science, consumer, industry and DH members
- Frequent contact with Themes
- Annual judgement against Milestones
- Gate-keepers for entry to the pipeline

NIHR

Revenue - £11.75m

Capital - £1.75m

Facility (Clinical Research & Repository)

NWDA

Capital - £6.4m

Facility (Med Microbiology & Bioanalytical)

Revenue - Project Manager



**Clinical Research Facility,
Biomedical Research Centre**



Health care advances through Clinical Science



Centre of Excellence in Microbial Disease